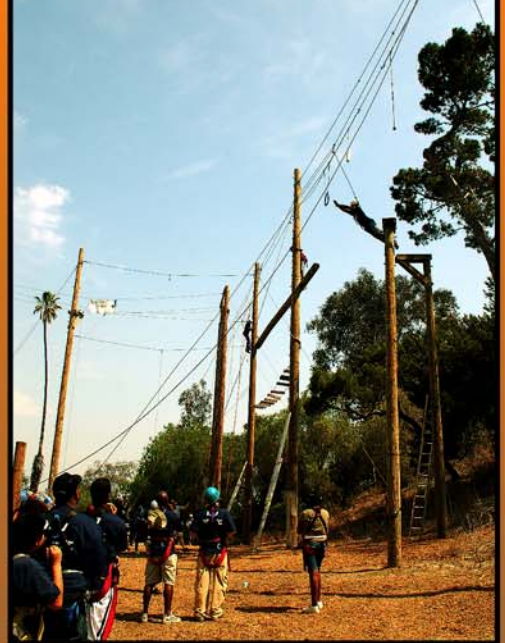


**DO. RISK. GROW!**



**FULCRUM ADVENTURES'  
CULVER CITY COURSE IS  
LOCATED AT 9700  
JEFFERSON BLVD. 90232  
(310) 452-7992**

**FROM DOWNTOWN LOS ANGELES:**

**TAKE THE SANTA MONICA FREEWAY (10) WEST. EXIT LA CIENEGA GOING TOWARDS CULVER CITY. MAKE A RIGHT ONTO JEFFERSON BLVD. HEADING WEST AND STAY ON JEFFERSON. STAY IN THE LEFT LANE WHEN YOU COME TO A Y BETWEEN JEFFERSON AND NATIONAL. STAY ON JEFFERSON. TURN LEFT AT DUQUESNE INTO CULVER CITY PARK. FOLLOW UP A SHORT HILL AND TURN LEFT INTO THE FIRST PARKING LOT WHERE A FULCRUM STAFF WILL MEET YOU.**

**FROM THE WEST SIDE**

**TAKE THE SANTA MONICA FREEWAY (10) EAST. EXIT OVERLAND AND TURN RIGHT. AT THE TRAFFIC LIGHT, TURN LEFT (SOUTH) ONTO OVERLAND. CONTINUE TO JEFFERSON BLVD. (PAST VENICE AND WASHINGTON BLVDS). TURN LEFT ONTO JEFFERSON BLVD. TURN RIGHT AT DUQUESNE INTO CULVER CITY PARK (APPROX. ONE MILE DOWN). FOLLOW UP A SHORT HILL AND TURN LEFT INTO THE FIRST PARKING LOT WHERE A FULCRUM STAFF WILL MEET YOU.**

**FROM SOUTH BAY**

**TAKE THE SAN DIEGO FWY ( 405) NORTH. EXIT JEFFERSON BLVD. TURN RIGHT ONTO JEFFERSON. FOLLOW JEFFERSON TO SEPULVEDA. CONTINUE STRAIGHT ONTO PLAYA STREET, WHICH TURNS INTO OVERLAND. AT THE SECOND MAJOR TRAFFIC LIGHT TURN RIGHT ONTO JEFFERSON. APPROX. ONE MILE DOWN, TURN RIGHT ON DUQUESNE INTO CULVER CITY PARK. FOLLOW UP A SHORT HILL AND TURN LEFT INTO THE FIRST PARKING LOT WHERE A FULCRUM STAFF WILL MEET YOU.**

**FROM THE VALLEY**

**TAKE THE SAN DIEGO FWY ( 405) SOUTH. EXIT WASHINGTON/CULVER BLVD. TURN LEFT ONTO SAWTELLE. TURN LEFT ONTO CULVER BLVD. FOLLOW CULVER BLVD TO DUQUESNE. TURN RIGHT ONTO DUQUESNE. CROSS JEFFERSON, STAYING ON DUQUESNE INTO CULVER CITY PARK. FOLLOW UP A SHORT HILL AND TURN LEFT INTO THE FIRST PARKING LOT WHERE A FULCRUM STAFF WILL MEET YOU.**

**FULCRUM®** [www.fulcrumadventures.com](http://www.fulcrumadventures.com)  
ADVENTURES INC. **310-452-7992**

